



1. Introduction

Thank you for purchasing this SAM-3204 encoder. This guide provides basic information for the installation, connection and configuration of the encoder. For more detailed information please contact your supplier or refer to the detailed product documentation.¹

2. Product Warranty

This product is subject to the Cathexis standard warranty terms and conditions.

3. Software Compatibility

The SAM3204 is compatible with CathexisVision 2016.4, and 2017.2 and later (2017.1 not supported).

Note:

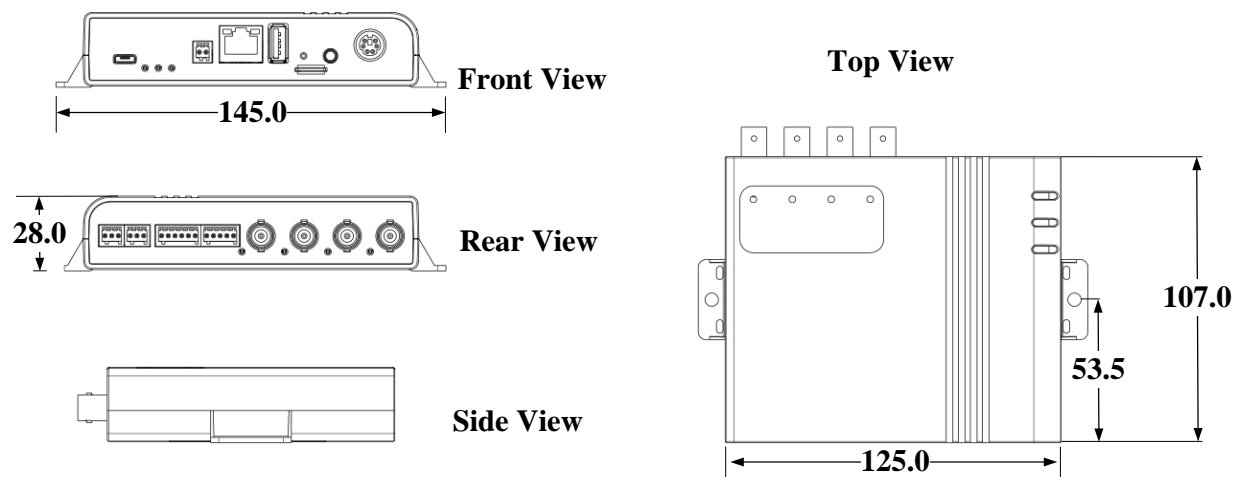
1. Audio supported only in CathexisVision 2018.2.
2. SAM3204 driver required in CathexisVision.

4. Product Features

- POE Class 3 Power Supply.
- Optimized H.264 video compression algorithm to facilitate transmission of High Quality video over low network bandwidth.
- Built in monitoring function.
- Supports PAL/NTSC.
- Provides RS485 serial port.
- 4x Audio input (Line In/MIC In).*
- Audio Output.*
- Dual streaming.
- Fully integrated within the Cathexis Network Video Recorder (Encoder software included with all CathexisVision software installations).
- Hardware watchdog and Built-in-tests.
- Isolated inputs and relay output.

* Note: Audio supported only in CathexisVision 2018.2 and later.

5. Encoder dimensions



6. Rack Mount

The SAM-3204 can be directly inserted into a 19" 1U chassis which can support 3 encoders. This must be ordered separately.



Front View of 19" Rack Mounting

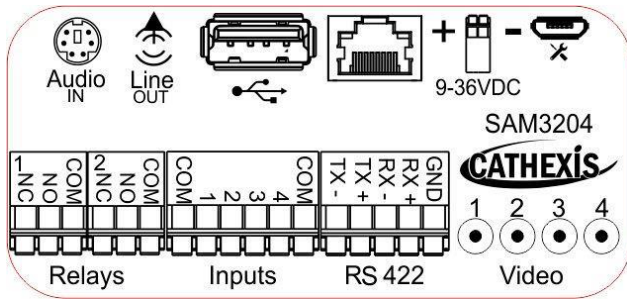


Rear View of 19" Rack Mounting

¹ While Cathexis has made every effort to ensure the accuracy of this document, there is no guarantee of accuracy, neither explicit, nor implied. Specifications are subject to change without notice.

7. Connections

Connections sticker appears on top of unit.



Ethernet

100BaseT RJ45 Poe Ethernet port
POE Input Power" 12VDC, 5.5Watt Max

Power In

8 to 36 VDC
5.5Watt Max

Mic In

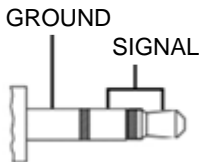
Line In/MIC In

8. Audio Connections (In/Out) *

Audio cable adaptor supplied with unit.



Use only stereo jack.



* **Note:** Audio supported only in CathexisVision 2018.2. and later

9. Warnings

Don't install the encoder in direct sunlight



Do not install the product in a damp area, or where it may be exposed to flammable liquids and/or gas



Do not install the product in a location where it may be exposed to extreme heat or cold (SPEC: -10 to +55 deg. C)



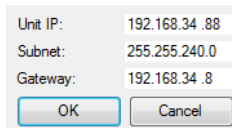
Do not install the product where it may be exposed to rain, water and/or radioactivity

10. Setting IP address

IP address can be changed via the Cathexis IP utility, which is installed with all versions of CathexisVision software. The utility can be run from any of these interfaces:

Ubuntu	CatEncoderSetup icon on Fedora Desktop. <code>/usr/nvr/nvr_encodersetup.</code>
Windows	Windows Start Menu Start → Programs → Cathexis → CatEncoderSetup
Windows Client	<code>C:\Program Files\CathexisVision Client\cat_encodersetup.exe</code>
Windows Server	<code>C:\Program Files\CathexisVision Server\nvr_encodersetup.exe</code>

- Right-click the listed encoder or click on the File menu, and select "Set IP", to display the "Single IP" window:



- Change the "Unit IP" to the new IP address.
- If necessary, also modify the "Subnet" and "Gateway" fields.
- Click "OK".
- The list refreshes itself approximately every 2 seconds – once refreshed, check that the encoder is now displaying the new details.

Note:

- Attempting to change IP Address during a firmware upgrade will not work.
- The Cathexis IP Encoder Utility requires Administrator access to function correctly. For most systems, the utility will automatically elevate its access rights, but on some Windows installations, the user may be required to select the 'Run as Administrator' option when invoking the utility. If encoders do not appear in the utility, first try Run as Administrator before contacting support.

For assistance please contact your supplier or Cathexis support at support@cat.co.za